

NOAA Environmental Satellites Products & Training

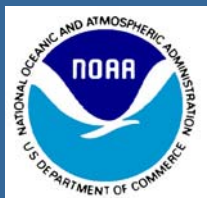
Anthony Mostek

NOAA/NWS/Training Division



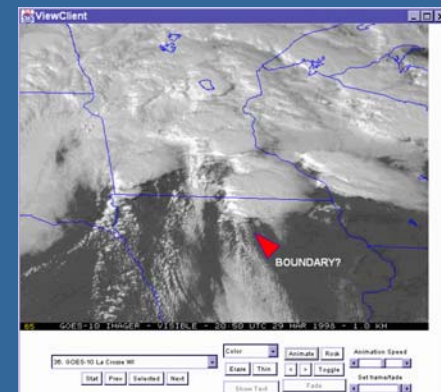
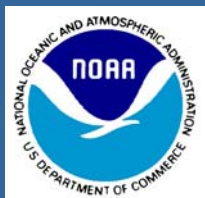
Boulder, CO

8 June 2009



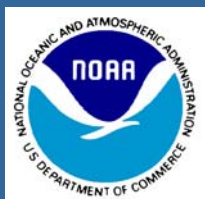
Key Points

- Satellite Training Community
- Where to find Products
- Where to find Training!

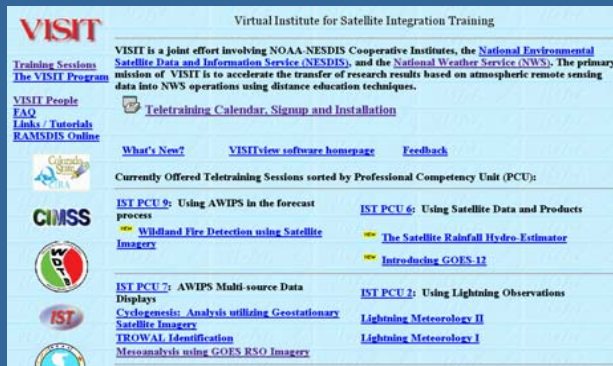


NOAA Training Community

- Dedicated NWS Training Division
- Many Partners in NOAA
 - NESDIS Cooperative Institutes & Programs
- International
 - EUMETSAT, WMO Space Programme Virtual Laboratory, Canada/MSC, Centres of Excellence, Focus Groups, ...



NOAA – COMET – WMO Working Together for Satellite Training

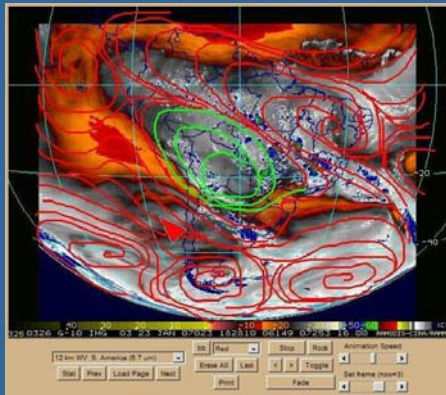


VISIT (CIRA/CIMSS)

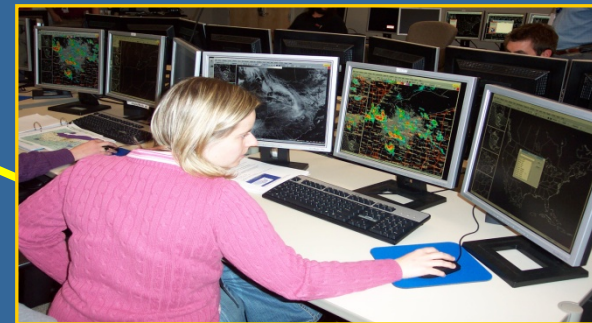


UCAR/COMET

Products & Training



WMO (VL & FG)



NWS Training Division

Users & Teachers



VISIT

Virtual Institute for Satellite Integration Training

[Training Sessions](#)
[The VISIT Program](#)

[VISIT People](#)
[FAQ](#)
[Links / Tutorials](#)
[RAMSDIS Online](#)

VISIT is a joint effort involving NOAA-NESDIS Cooperative Institutes, the [National Environmental Satellite Data and Information Service \(NESDIS\)](#), and the [National Weather Service \(NWS\)](#). The primary mission of VISIT is to accelerate the transfer of research results based on atmospheric remote sensing data into NWS operations using distance education techniques.



[Teletraining Calendar, Signup and Installation](#)

[What's New?](#)

[VISITview software homepage](#)

[Feedback](#)



Currently Offered Teletraining Sessions sorted by Professional Competency Unit (PCU):

CIMSS



[IST PCU 9:](#) Using AWIPS in the forecast process

NEW [Wildland Fire Detection using Satellite Imagery](#)

[IST PCU 6:](#) Using Satellite Data and Products

NEW [The Satellite Rainfall Hydro-Estimator](#)

NEW [Introducing GOES-12](#)

[IST PCU 7:](#) AWIPS Multi-source Data Displays

[Cyclogenesis: Analysis utilizing Geostationary Satellite Imagery](#)

[TROWAL Identification](#)

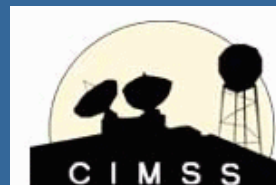
[Mesoanalysis using GOES RSO Imagery](#)

[IST PCU 2:](#) Using Lightning Observations

[Lightning Meteorology II](#)

[Lightning Meteorology I](#)

<http://rammb.cira.colostate.edu/visit/visithome.asp>





MetEd

Meteorology Education & Training

Operated by the **COMET** Program

Serving meteorologists since 1989

TOPICS	COMMUNITIES	COURSES
Aviation Weather Climate Coastal Weather Convective Weather Emergency Mgmt Fire Weather Fog and Low Stratus Hurricanes/Tropical Hydrology/Flooding Marine Meteorology Mesoscale Met NWP (Modeling) QPF (Precipitation) Satellite Meteorology Winter Weather Other	SDOs WCMs Northern Latitudes MeteoForum NPOESS Userport K-12 and the Public Higher Education <div style="background-color: #4a69bd; color: white; text-align: center; padding: 2px;">RESOURCES</div> Multimedia Database Downloads Module List Outreach Program DataBase AWIPS Validation Outside Links	Residence Courses Distance Courses <div style="background-color: #4a69bd; color: white; text-align: center; padding: 2px;">CASES</div> NWS-COMET Cases CD-based Cases NWP Cases WES Cases <div style="background-color: #4a69bd; color: white; text-align: center; padding: 2px;">ABOUT MetEd</div> Mission and Sponsors Subscribe to Updates Contact Us/Purchase Support Legal Notices

What's New?

- [An MCS Matrix](#) (Web Version)
- [A Convective Storm Matrix: Buoyancy/Shear Dependencies](#) (Web Version)
- [Seventh of Ten Common NWP Misconceptions](#)
- [Gap Winds](#)
- [A Comparison of Diagnosed Vs. Predicted Precipitation Type in the Eta Forecast Model: 3-6 December 2002](#)

Of Special Interest

To help forecasters brush up on their **convective weather** and **flood forecasting** skills, the COMET Program has just released Web versions of two of our popular CD modules:

A Convective Storm Matrix: Buoyancy/Shear Dependencies is a valuable interactive exercise and

[A Convective Storm Matrix: Buoyancy/Shear Dependencies](#)

Last updated: April 17, 2003 [More »](#)

http://meted.ucar.edu



Anthony.Mostek@noaa.gov

COMET METED - meted.ucar.edu