



unidata

Director's Report

Policy Committee Meeting
9 October 2003

Mohan Ramamurthy
Unidata Program Center
UCAR Office of Programs
Boulder, CO



unidata

Staffing

- Ed Hartnett, Software Engineer, has been hired to work on the NASA-AIST project to merge NetCDF and HDF5.
- Our Administrative Assistant and Travel/Meetings Coordinator, left Unidata on October 6 to go work for GLOBE, a new sister program in UOP. We plan to hire a replacement ASAP.
- We also plan to add two new staff (Software Engineers) for LEAD
- Total count when fully staffed: 30

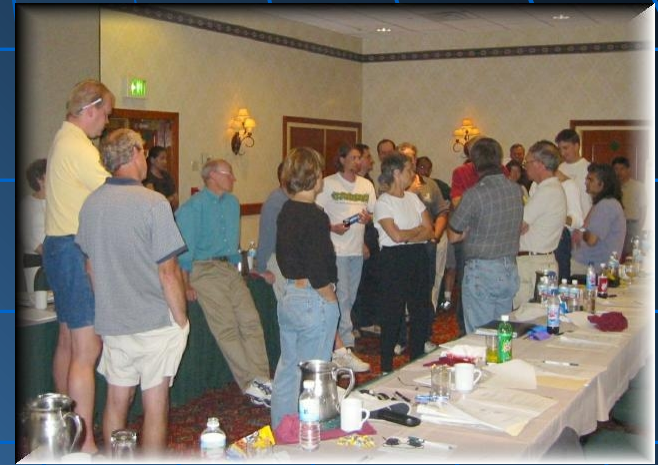




unidata

UPC Staff Retreat

- The all UPC Staff Retreat was held on September 9-10, 2003 in Vail, CO.
- The retreat addressed many important questions concerning the UPC:
 - How do we deal with change brought about by all the successful proposals?
 - How do we improve the Unidata enterprise?
 - Held brainstorming sessions on work environment, software development, community support, communication, organization structure, committee interaction, etc.
- The retreat was highly successful and has already resulted in concrete steps:
 - The idea of new member orientation is a direct outcome
 - Ditto for status reports tying items to Unidata 2008 endeavors
- But it is a work in progress.





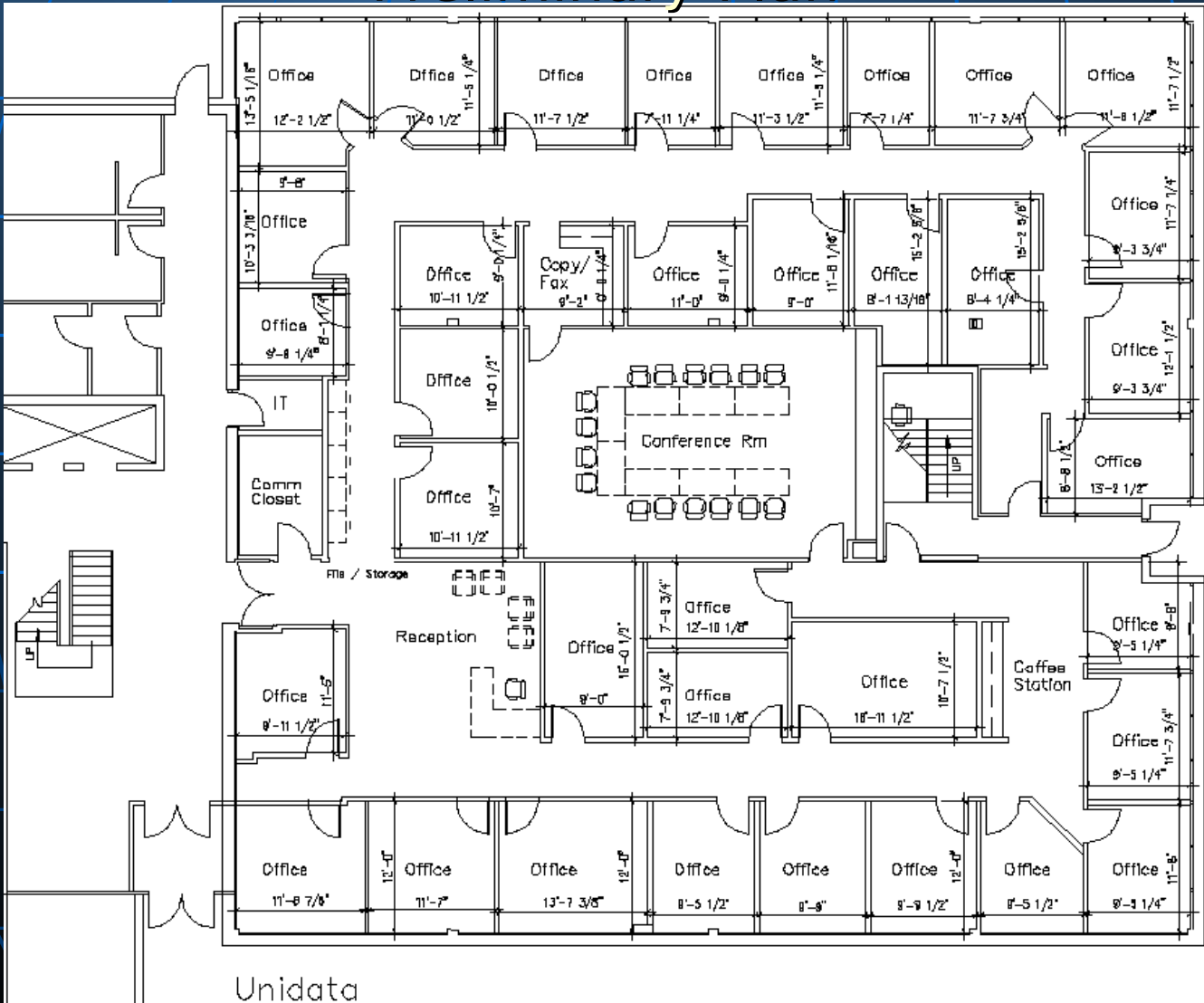
unidata

FL4 Remodeling

Preliminary Plan

UPC Will:

- Expand into the south wing
- Have more space
- Have all staff in one suite
- Some additional areas (e.g., demo area, coffee station)
- Move to CG On Nov. 13-14
- Return to FL4 by end of April 2004

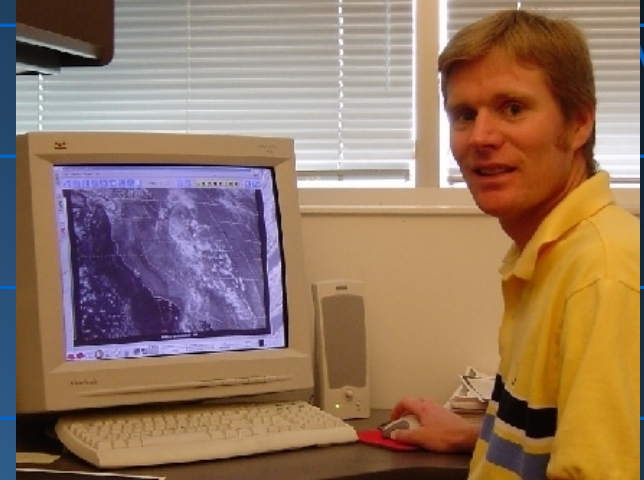




unidata

Users Committee

- The Users Committee has a new chair: Jim Steenburgh, University of Utah
- Also, added three new members:
 - Elen Cutrim
Western Michigan University
Geography Department
 - Thomas L. Mote
University of Georgia
Department of Geography
 - Michael Voss
San Jose State University
Meteorology Department



Thanks to Departing Members:

Rich Clark, Chair

Bill Fingerhut

Tony Rockwood



unidata

Equipment Awards

- 16 proposals were received, one from Argentina.
- The total pool (including overhead) in FY03 \$203,000 vs. total requests of \$328,425.
- 14 proposals were awarded for a total of \$164K including overhead (Range of awards: \$4,500 to \$15,834)
- Some proposals were of sub-par quality. Need community education and means to improve the overall quality in future years.
- Equipment award program will again be available in FY 04.
- The schedule is being moved up to accommodate academic calendar.
- Announcement will likely be made in January 2004.
- Policy Committee will be discussing our policy towards and prioritization of international awards next week.





unidata

Summer Workshop: 23-27 June 2003

- *Expanding Horizons Using Environmental Data for Education, Research, and Decision Making.*
 - Despite the the lower total attendance (~70) compared to previous workshops, the meeting was quite successful in bringing new participants to the workshop and in addressing important issues surrounding the theme.
 - The UPC is moving forward with many GIS activities



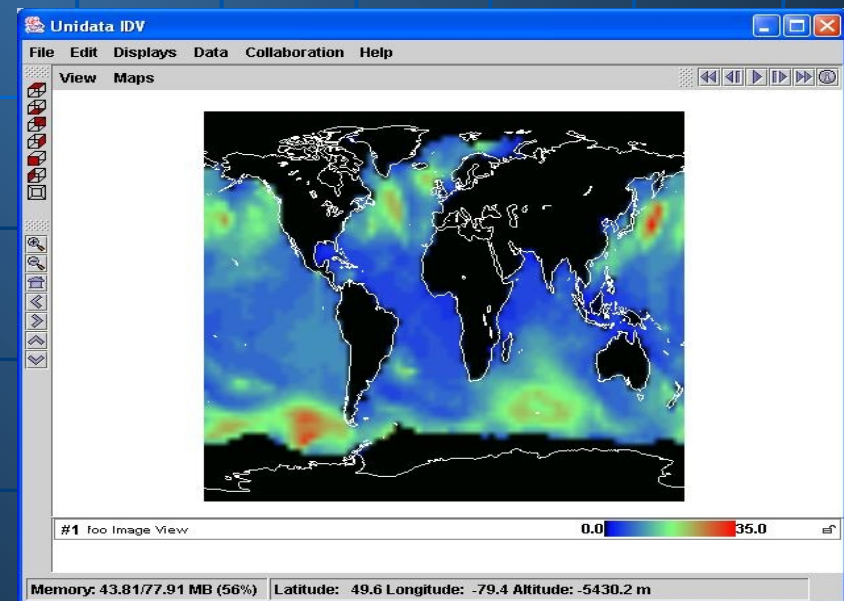
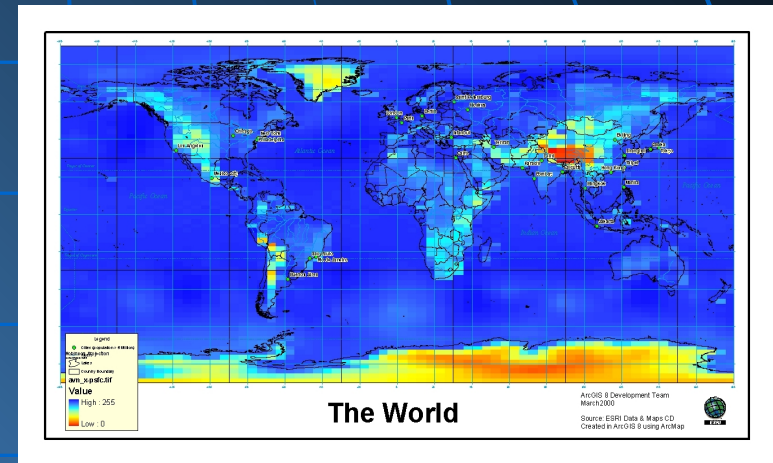
In addition, Unidata hosted the Eleventh ESIP Federation Meeting in July and the CONDUIT Working Group Meeting in late May.



unidata

Unidata and GIS

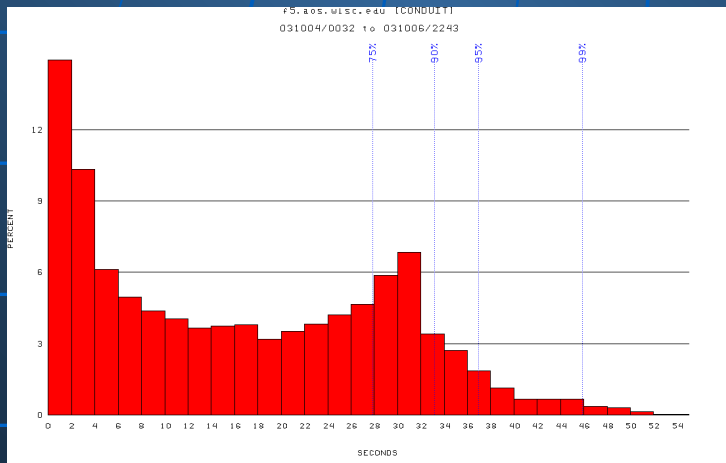
- Actively involved in UCAR GIS Initiative; UCAR now a member of the Open GIS Consortium
- Taking initial steps toward integration of Unidata tools with GIS
 - Display of Digital Elevation Model data, ArcInfo ASCII Grid files, GeoTIFF, shape files, etc. in the IDV
 - WCS interface for THREDDS (gateway service between GIS and SIS)
 - Specification of a GIS extension for NcML
 - Radar mosaics for GIS (GEMPAK-GIS work)
 - Re-formatting GRIB products into GeoTIFF format



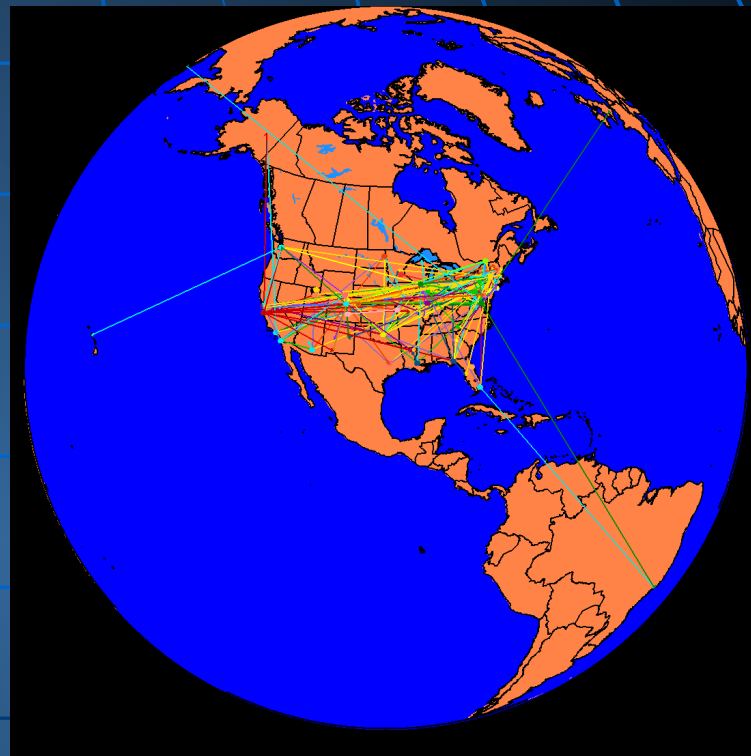


unidata

Advances enabled by LDM-6



- About 144 sites in 93 domains running LDM-6 on the IDD
- LDM-6 has greatly improved the timeliness and reliability of CONDUIT and other data streams
- 23 sites participating in CONDUIT
- NWS will use LDM-6 to distribute WSR-88D Level II data

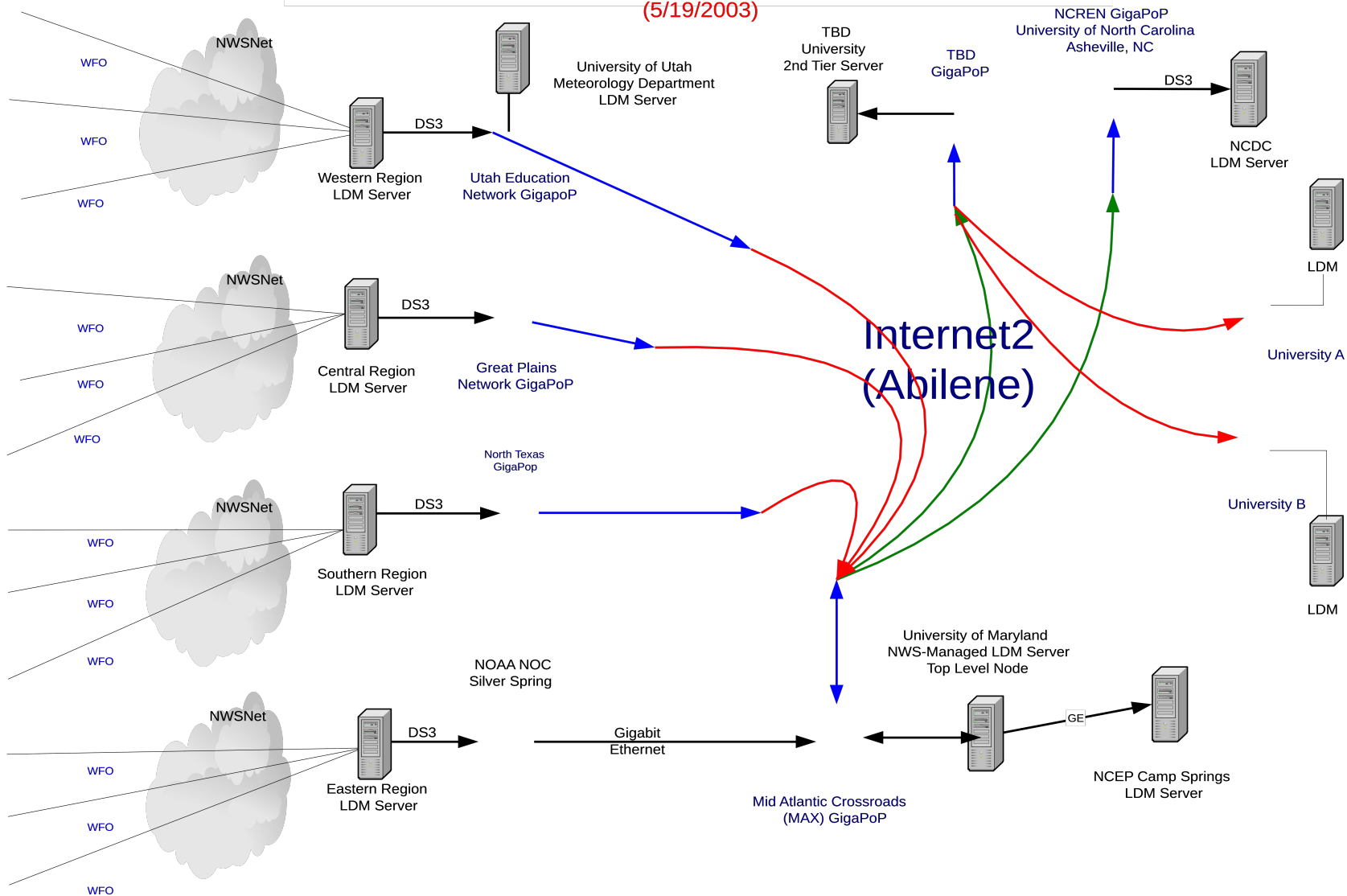


- Unidata Real-time data distribution via IDD/LDM6



LDM Use by the National Weather Service

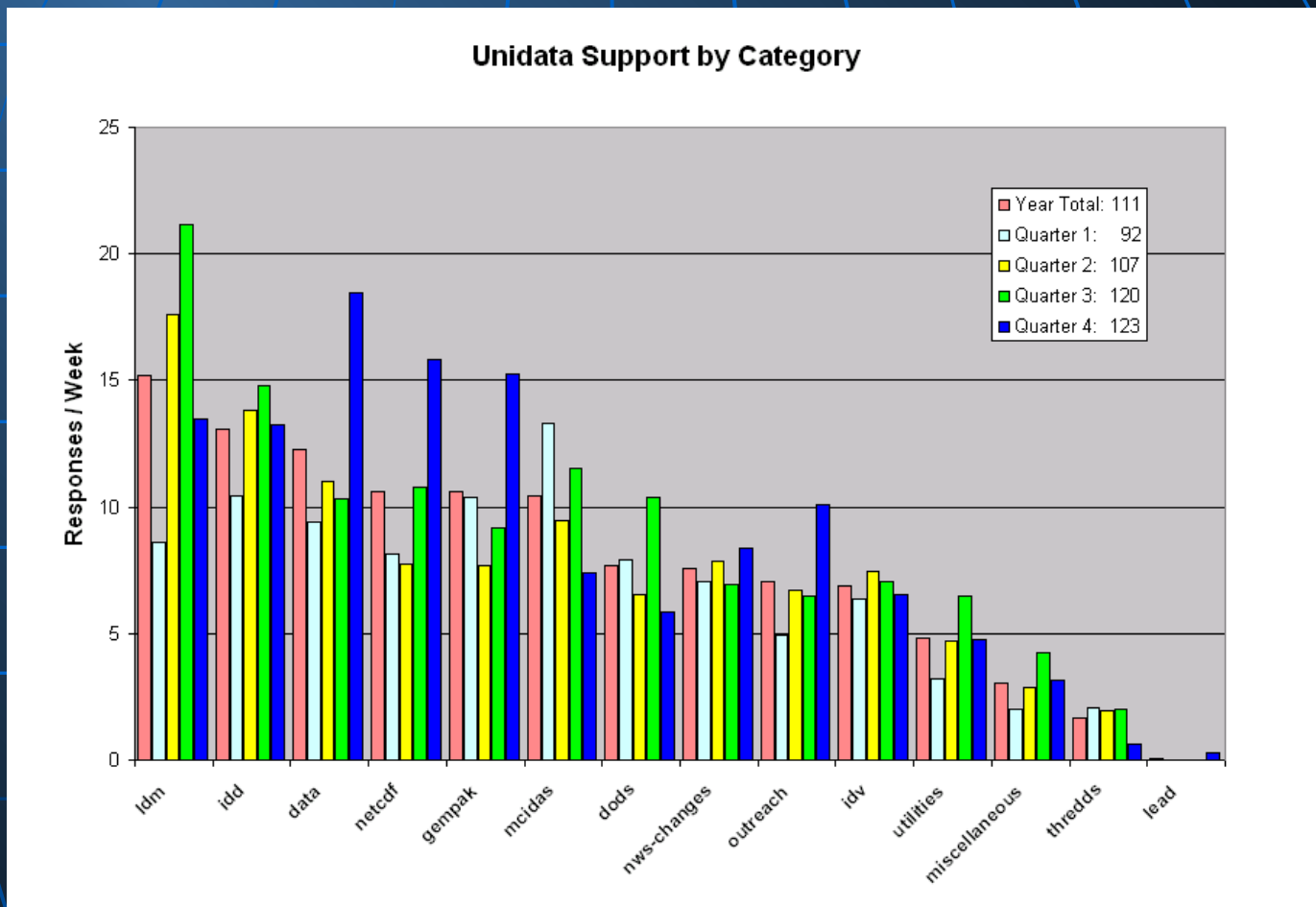
Level II Radar Distribution Full Operational Capability (FOC) LDM Architecture (5/19/2003)





unidata

Email Support Load



Total email queries per week continue to increase from 92 in Q1 to 123 in Q4 – a 33% increase, which is unsustainable



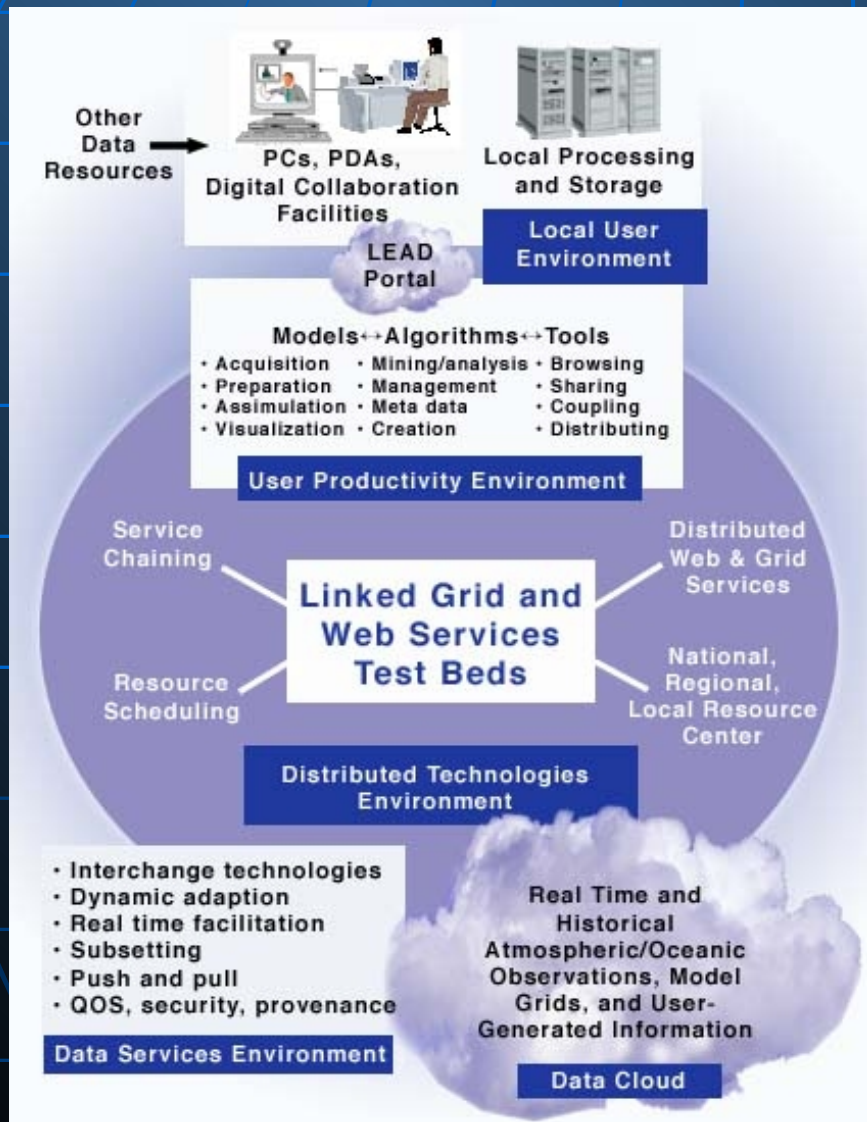
Successful Proposals

- Unidata 2008 – core funding for next 5 years
- THREDDS – 2nd Generation (NSF-EHR/NSDL)
- NetCDF-HDF5 Merger (NASA-AIST)
- LEAD (NSF-ITR)
- DLESE Data Services
- Thematic portal for Ocean data (NASA-REASON)
- Enhancing metadata interoperability (NSF-SGER)



unidata

LEAD: A Large-ITR Effort



- Linked Environments for Atmospheric Discovery
 - Identify, Access, Assimilate, Predict, Manage, Mine, and Visualize a broad array of meteorological data and model output, independent of format and physical location
 - A range of Grid and Web Services will be developed for dynamic, on-demand computing
 - Institutions: U. Oklahoma, Unidata, U. Alabama, U. Illinois, U. Indiana, Millersville U., Howard U. and Colorado State U.



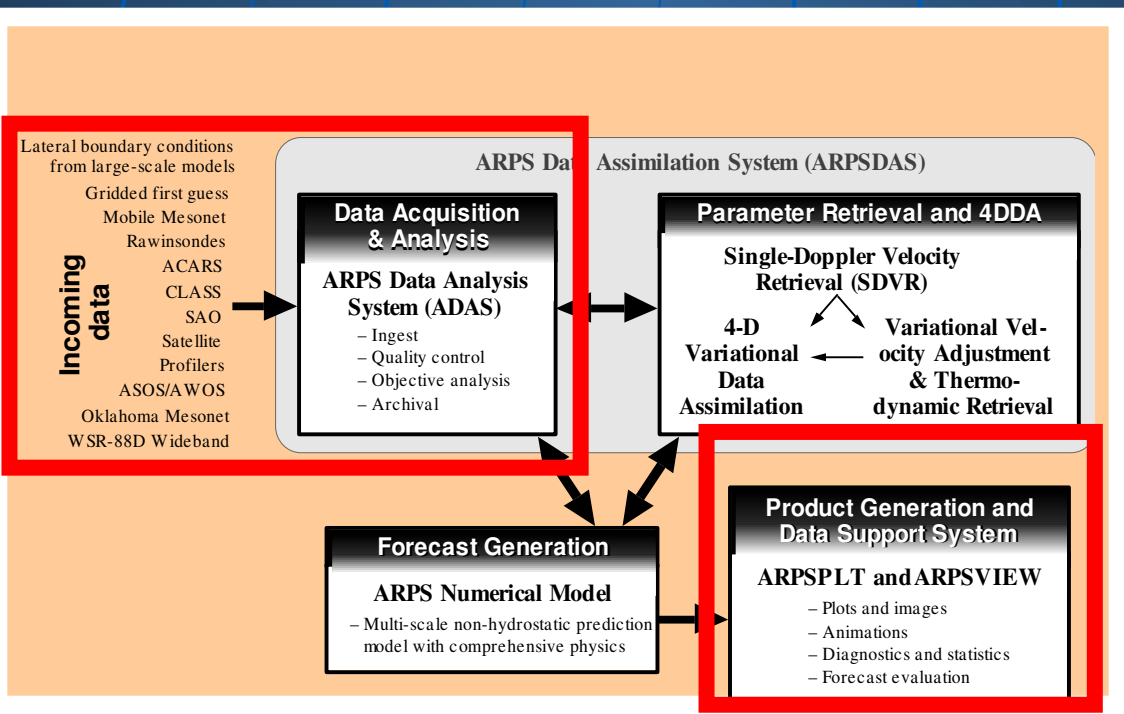
unidata

LEAD & Prediction Process

Will use the WRF model
End-to-end prediction system using Grid and Web services

Capability for real-time, on-demand, and retrospective prediction and case studies

Many Unidata tools and technologies will be used (IDD, LDM/NLDM, IDV, THREDDS, NetCDF and VGEE)





Unidata 2008: First Year Budget Target

- Received word from NSF that the first year budget (coincides with FY04) target is \$3.4M (the actual amount may be higher or lower)
- Several funded proposals (e.g., THREDDS2G, LEAD, NetCDF-HDF, DLESE Data Services) provide “relief” to the amount of \$403K for SBO (salary, benefits and overhead) to offset the reduced target.
- Additional cuts will come from the elimination of new staff and visitor positions in Unidata 2008. Also, other areas (travel, equipment, purchased services, etc.) will be cut to meet the target.
- More details in Joanne’s budget presentation



State of the Program: A Snapshot

- Community relations : Green
- Data sources : Green
- IDD : Green
- Software Development : Yellow (due to support load)
- Collaborations : Green
- Staffing : Green
- Support Load : Yellow (a 33% increase in one year)
- Space : Yellow (Move to temporary space)
- Finances (Core) : Yellow (More in budget report)
- Non-core funding : Green (More in budget report)
- Case Studies : Yellow